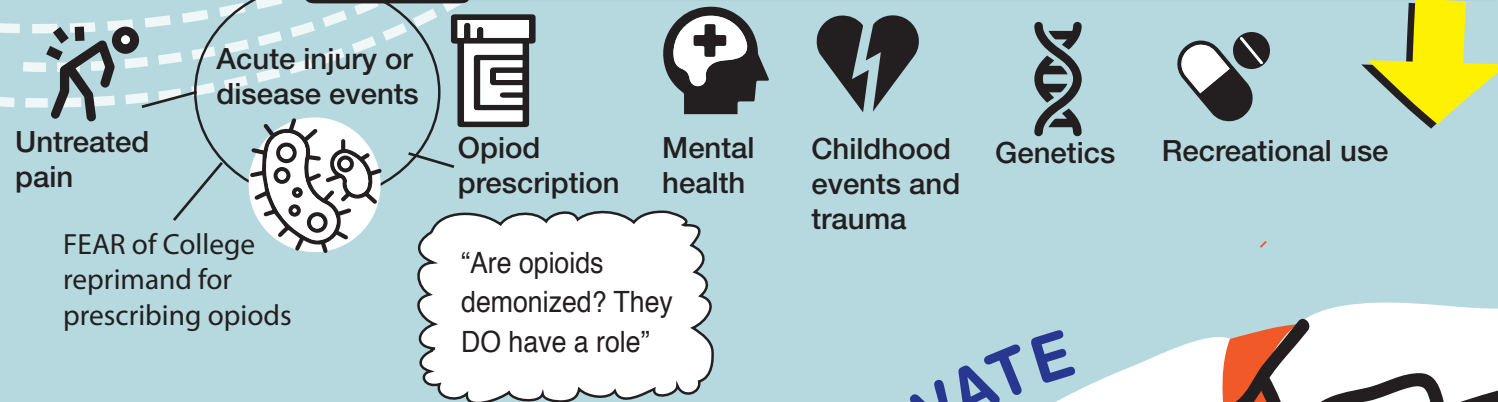


# ACCESSING TREATMENT: what do providers experience?



## PREVENTION

### TRIGGER POINTS LEADING TO ADDICTION



#### ENTRY POINTS:

- Private methadone clinics
- Private addiction clinics
- Private treatment centres

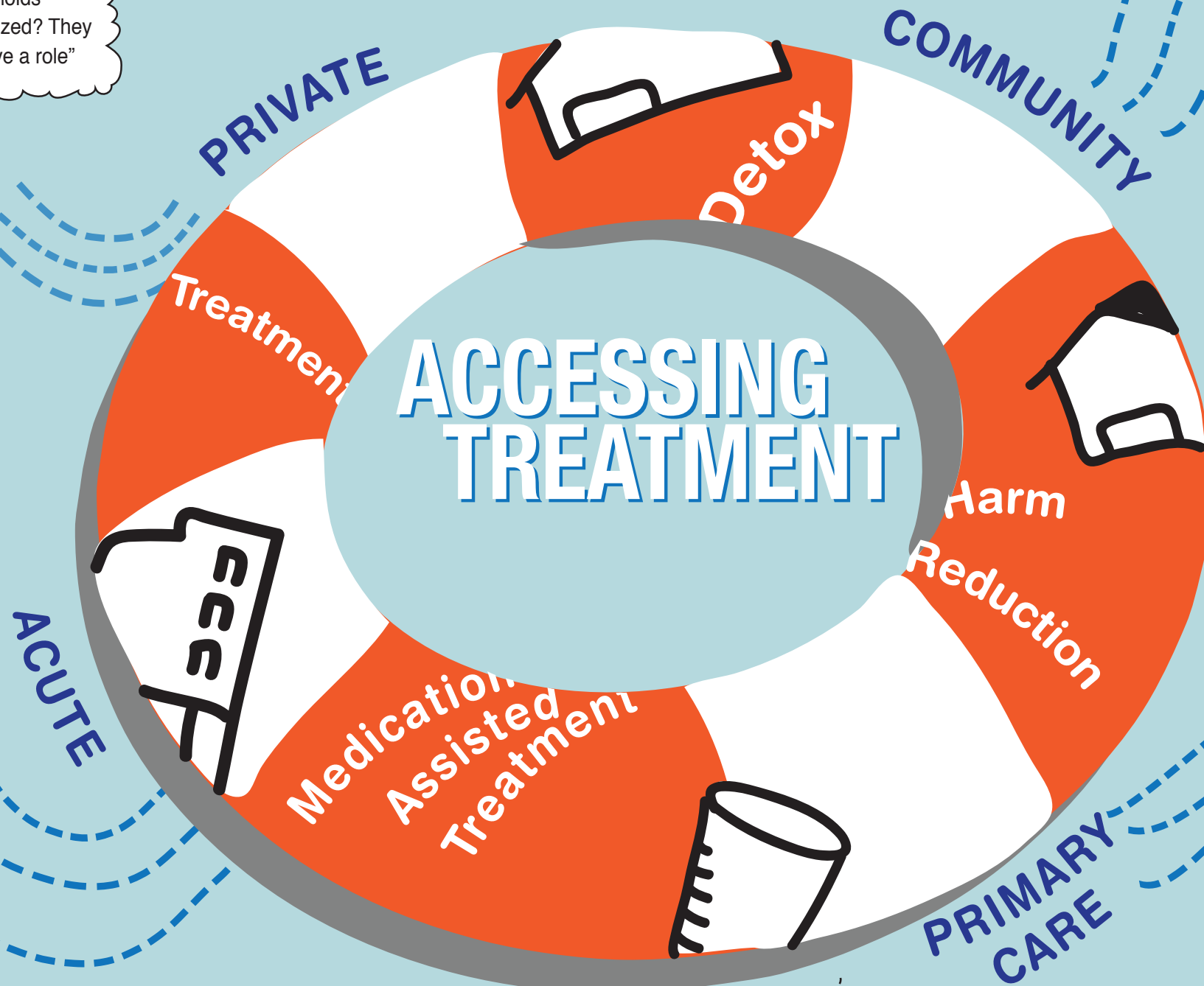
WORRY: about the quality of care within unregulated and profit-based private treatment facilities

#### ENTRY POINTS:

- Overdose to Emergency Department
- Hospital admission for complications of drug use

**STIGMA:** for providers and patients

Addiction needs to be reframed as a chronic disease



#### ENTRY POINTS:

- Detox
- Correctional facilities
- Shelters
- Harm reduction/Safe injection sites
- Crisis lines
- Outreach nurses
- Pharmacy
- Counselling
- Overdose in community (treat and release)
- Public health/home visit

#### ENTRY POINTS:

- Walk-in clinic
- Drop-in visit to GP's office
- Requesting early opioid refills from GP
- Referral from workplace
- Remote nurses
- Family member makes appointment
- Youth transition
- Transient drop-in
- Court Mandate
- Friendship centers
- First Nations wellness centers
- Elders
- Friends
- Cultural ceremonies MCFD
- Spiritual healers