



Photo from the NW: Melina Sterling



Photo from the NE: Jackie Winkler



Photo from the NW: Daniel Egli

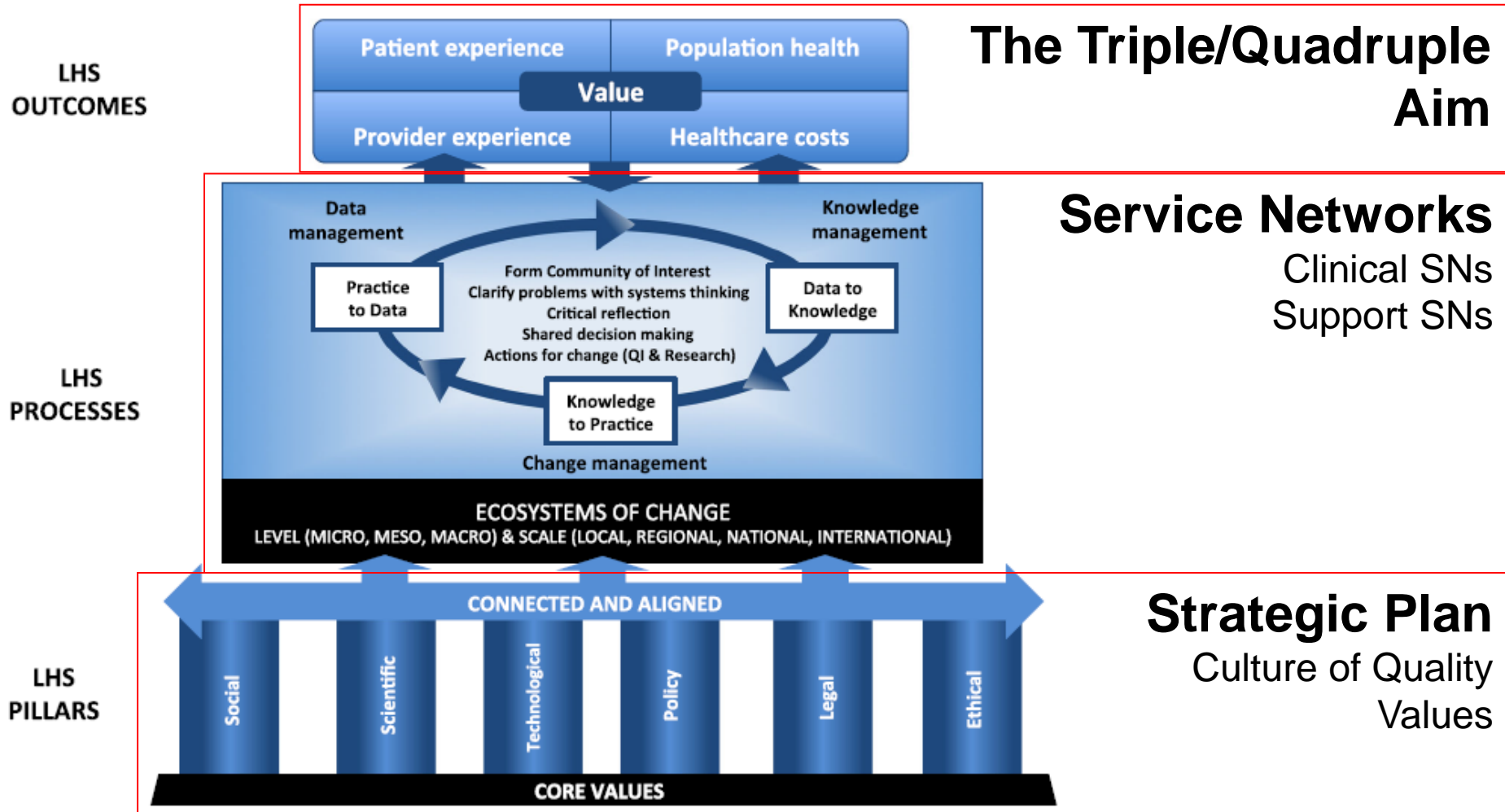


Maturing a Learning Health System in Northern BC

Vash Ebbadi-Cook, RD, Q&I

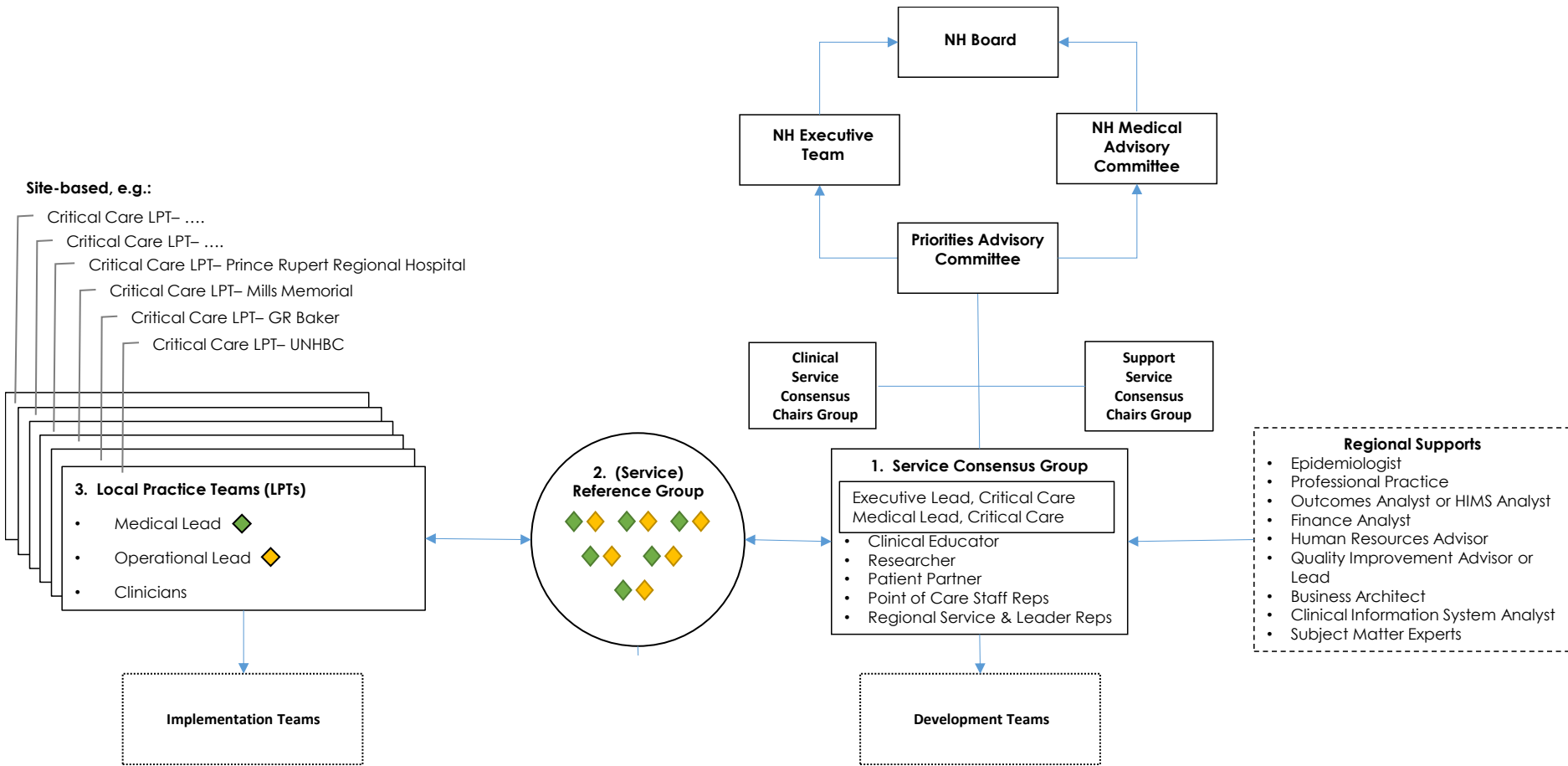
Julia Bickford, RD, REA

Maturing as a Learning Health System

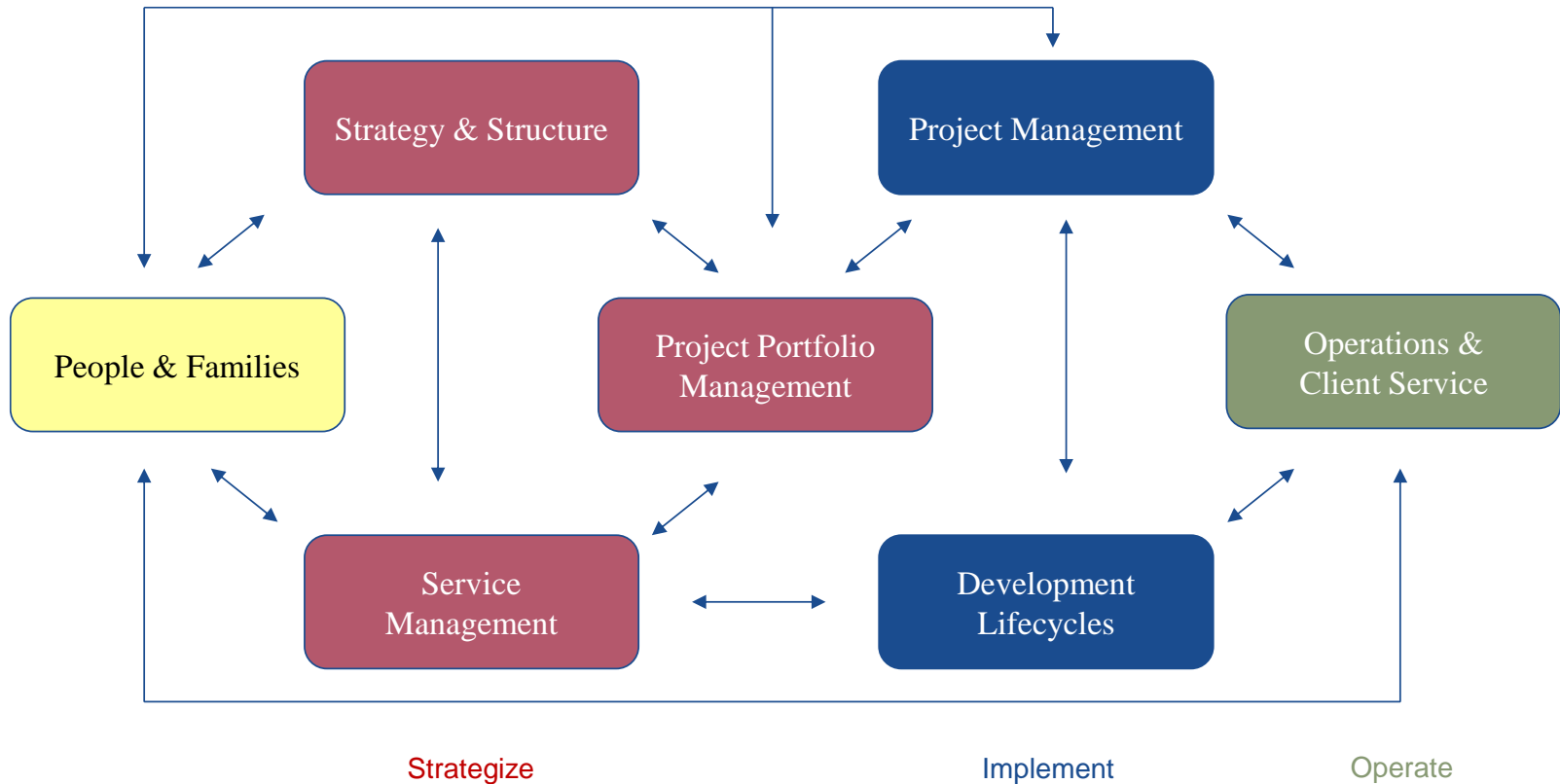


Meneer et al. A framework for Value-Creating Learning Health Systems. Health Research Policy and Systems (2019) 17:79
<https://doi.org/10.1186/s12961-019-0477-3>

Service Networks



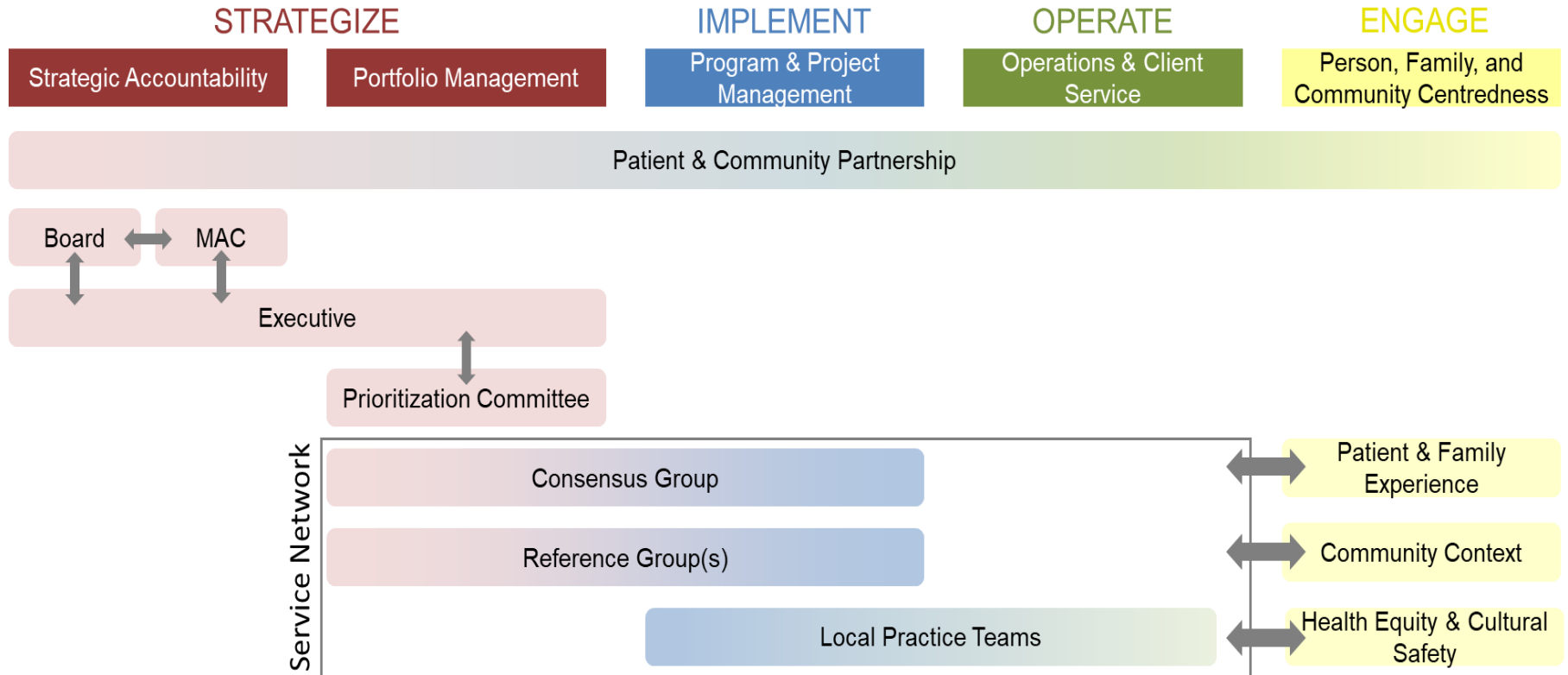
Aligning with Project Portfolio Management



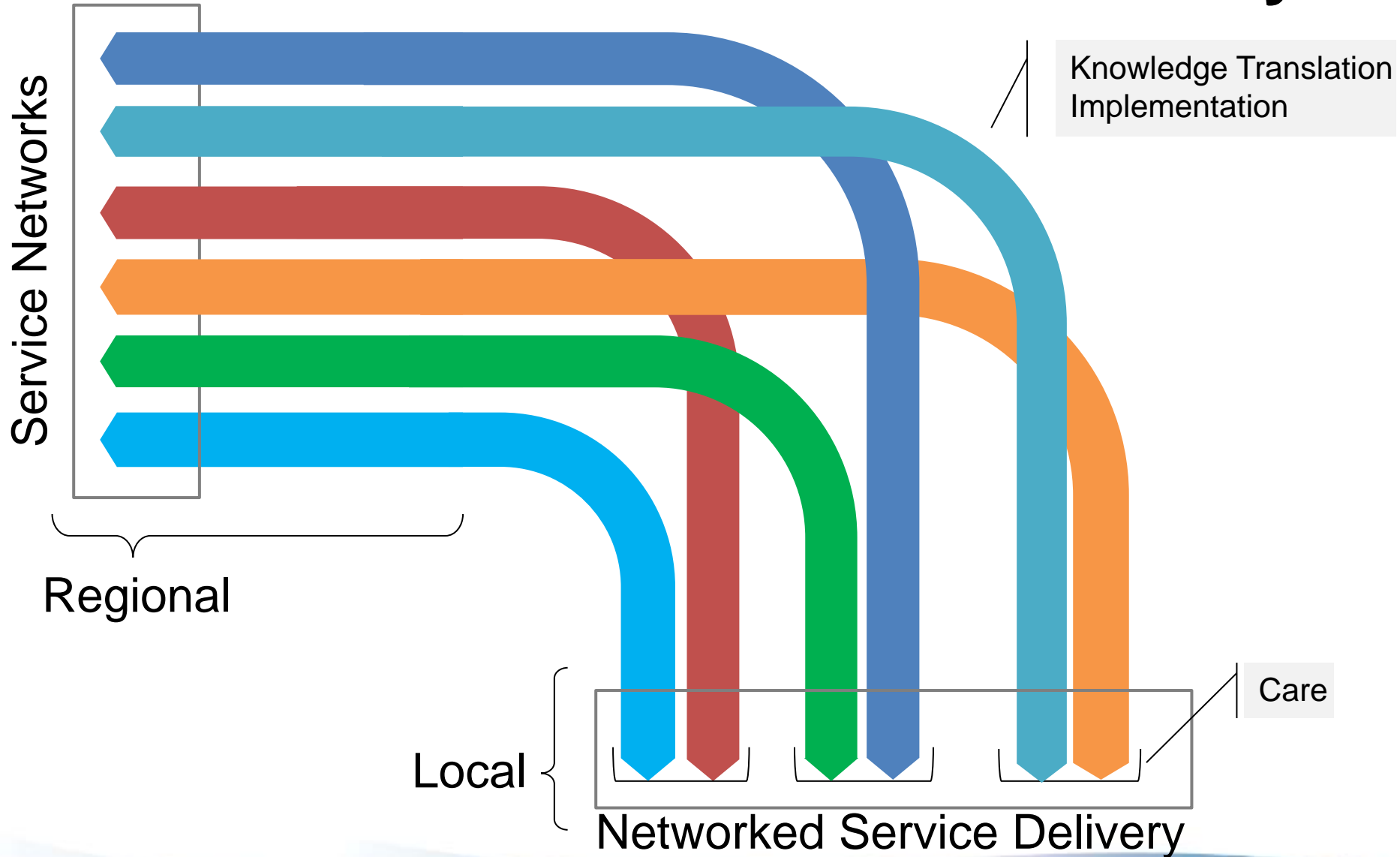
Adapted from Ernie Nielsen, *Project Management Instruction Manual*

Project Portfolio Management offers a structured approach to guide organizations in developing priorities and in implementation through well established and resourced projects

Aligning with Project Portfolio Management

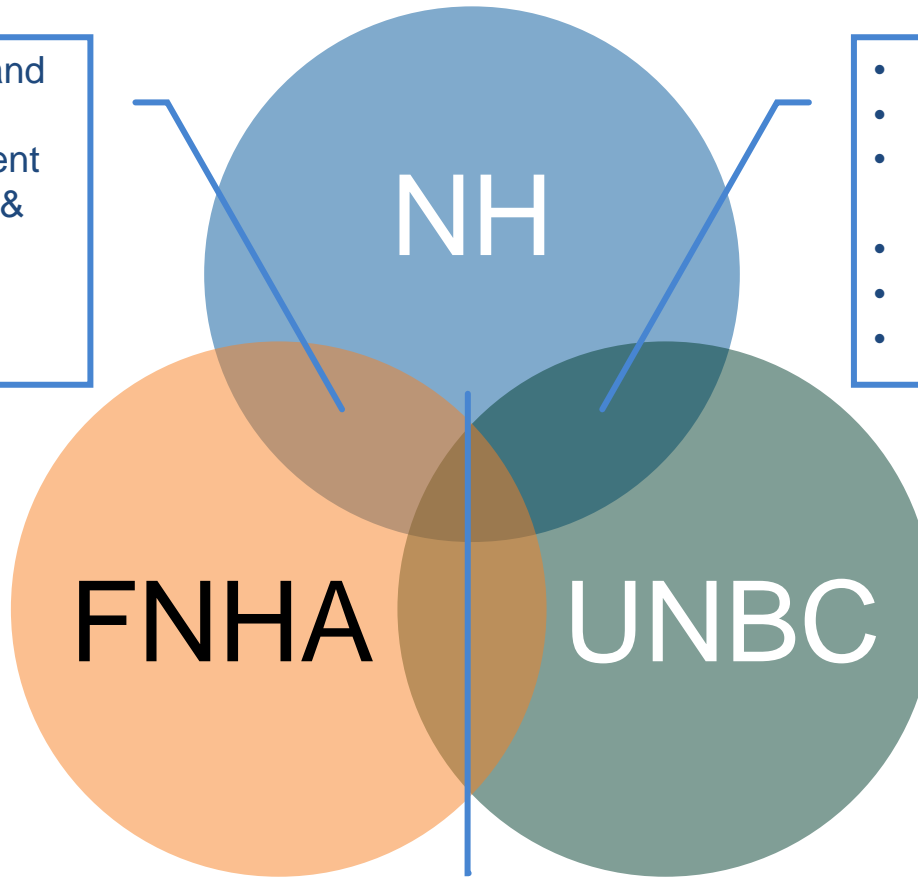


Toward Networked Service Delivery



Partnerships

- Aligning prioritization and improvement
- Community Engagement
- Alignment with Health & Wellness Plan



- Student Internships
- Enterprise Architecture
- Business Process Management
- Research – SPOR
- Knowledge Mobilization
- PFCC & Engagement

- Maturing a LHS in Northern BC
- Alignment with Office of Indigenous Initiatives
- Foster community engagement

Current Challenges

- Knowledge Translation & Communication
 - Articulating complex concepts in a digestible and informative way
- Optimizing Standardization
 - What too much? What too little?
- Clarifying Roles & Responsibilities
 - Who drives learning and knowledge-to-action?
 - How do we enable and sustain this?
- Fostering Culture Change
 - Orienting to an organizational learning mindset

Discussion

- How does your organization *network*?
- What does *knowledge-to-action* look like in your organization? How do leaders, care providers, and supportive services come together to enable this?
- Questions for us?