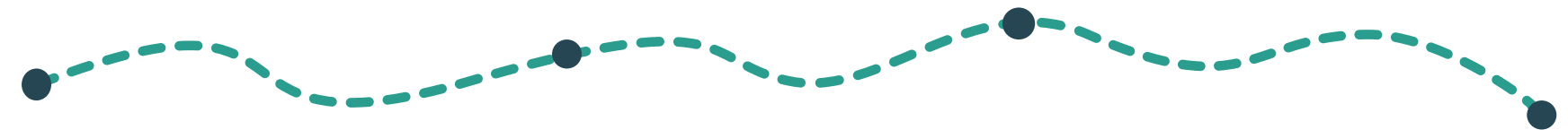


Harms of false penicillin allergy labels: *Meet Anna*



We need your feedback -
Help us improve!
<https://bit.ly/2YeMcJO>

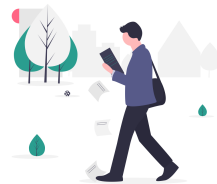


Allergy labeled



Anna took penicillin and developed a mild rash after two days.

Allergy not assessed



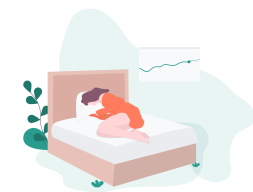
She was never assessed to see if she was truly allergic to penicillin.

Alternative antibiotic use



Because of this, Anna was prescribed an alternative antibiotic.

ICU visit



The antibiotic caused severe bloody diarrhea (*C. diff*) which required a stay at the ICU.

Anna was never allergic to penicillin, her ICU visit could have been prevented.

Ask your provider to assess your allergy status **BEFORE** you need antibiotics.
Dropthelabel.ca