

## Quality Culture Trailblazer Nomination Questions

### Section 1: The Trailblazer's Landscape

Briefly summarize the nominee's work. **(150 words maximum)**

Please provide a clear description of the workplace culture before the nominee took action.  
**(1,000 words maximum)**

### Section 2: Impact

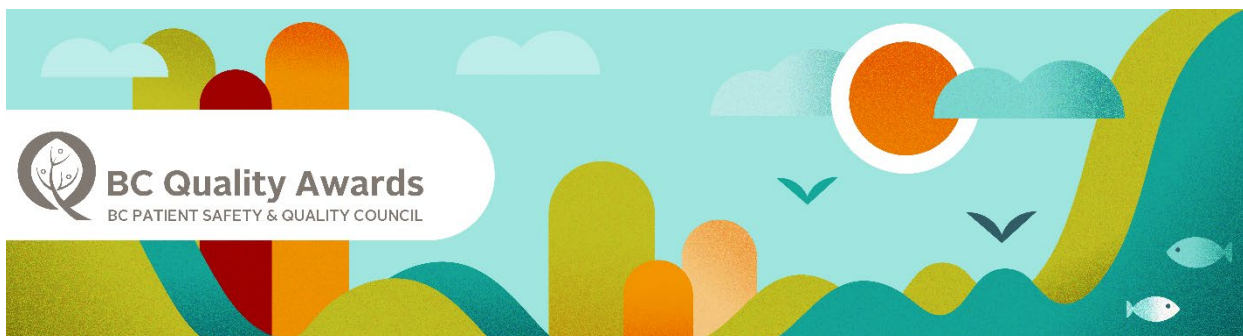
How did the nominee change their workplace's culture so that team members thrive and patients receive the best care possible? **(1,000 words maximum)**

### Section 3: Inspiration

Explain how the nominee inspires you and/or their team members. **(1,000 words maximum)**

### Section 4: Engagement

Who did the nominee engage so that the nominee's work would be successful and sustainable?  
How were they engaged? **(1,000 words maximum)**



## Quality Culture Trailblazer

### Judging Criteria

Judges will score nominations based on the following framework.

#### **1. The Trailblazer's Landscape** / 10

There are countless, and often outside-the-box or unconventional, ways in which change can take place so that a nominee's team members thrive and patients receive the best care possible. This category considers what aspects of their workplace culture the nominee changed and why.

---

#### **2. Impact** / 15

This category considers the nominee's actions as well as the amount of positive change that those actions catalyzed.

Examples illustrate how the nominee created an environment where passionate staff are empowered and encouraged to innovate; where teamwork and open communication are the norm; where team members work hard, but also have fun while doing so.

---

#### **3. Inspiration** / 10

The nominee inspires others to challenge the status quo in their mission to provide better care. Examples illustrate others committing to acting differently as a result of the nominee's work.

---

#### **4. Engagement** / 10

The nominee meaningfully engaged those affected by the project, such as patients, families and/or caregivers, and health care professionals.

---

---

**5. Quality of Submission****/ 5**

The submission contains minimal spelling and grammatical errors, jargon and acronyms. The submission is presented coherently.

---

**Total****/ 50**

---