

Health Improvement Networks

July 6, 2022

Critical Care Exec committee

Overview

- Review the HIN purpose
- Discussion further stakeholder discussion
- Support recruitment – JD's

Purpose of a HIN

- A Health Improvement Network (HIN) is a network of provincial partners created to drive improvement across the BC health care system and ultimately optimize health outcomes and achieve the quintuple aim. A HIN works to improve the experience and delivery of health services for patients within a particular population or disease group.
- HINs enable province-wide performance monitoring of the health system through the development of provincial datasets, available provincial data systems and strategic implementation planning for group-identified system-wide improvements, innovation and the advancement of research and training in those areas of focus.

Goals of a HIN

With respect to the **specific population or disease/condition or service**, a HIN:

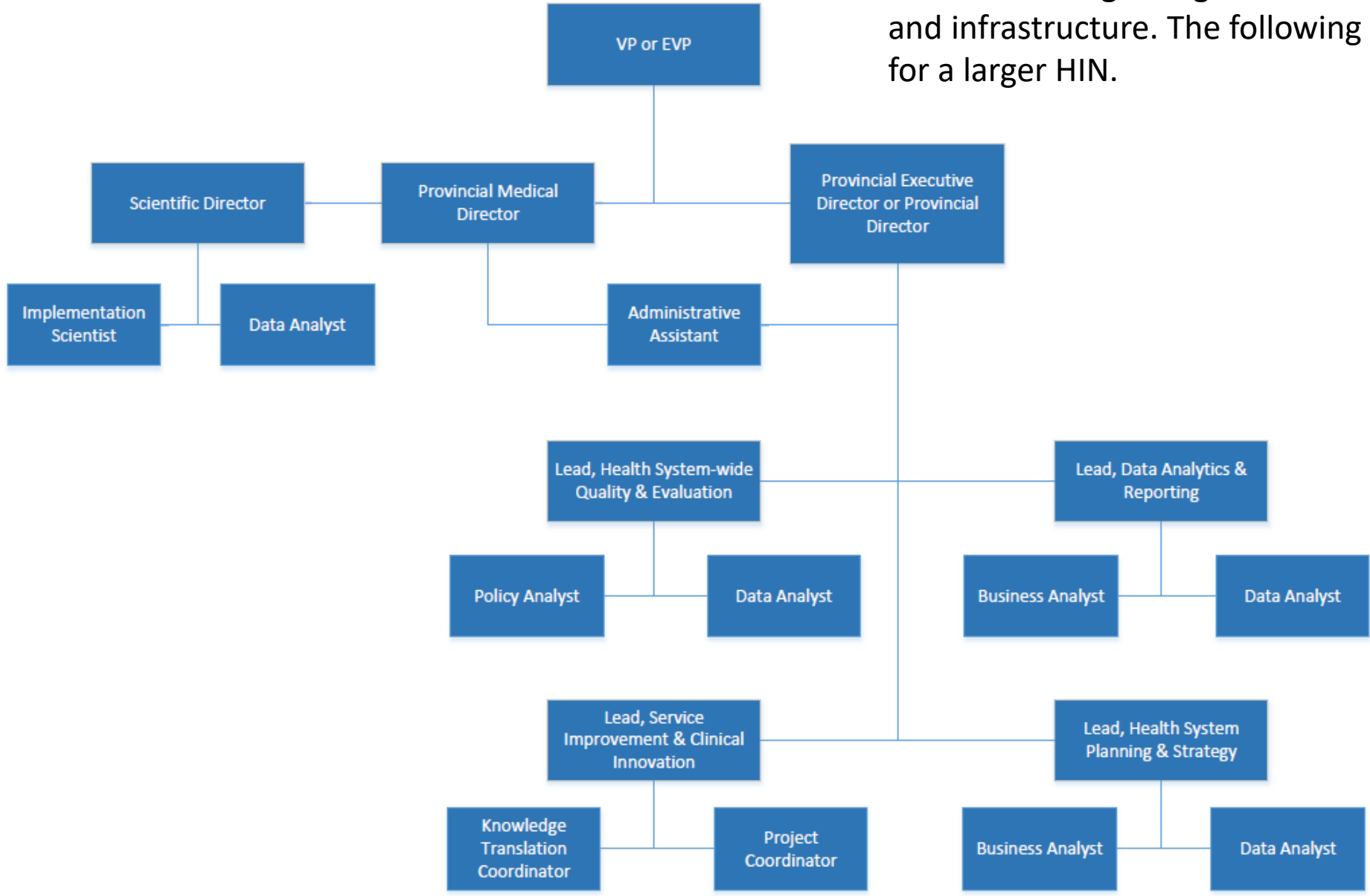
- Reduces unwarranted variation in health service across BC
- Supports improved allocation of resources across the health care system
- Increases province-wide capacity and value
- Supports multi-disciplinary providers in the delivery of high quality services
- Facilitates the use of and contribution to science
- Improves health outcomes and experience

Functions of a HIN: The network will...

- Strategic planning of holistic health services with a focus *across* health authority boundaries and in support of regions
- Informing the appropriate distribution of services across the province based on the tiers of service
- Collating and analyzing province-wide data to enable proactive health system intelligence to improve services and care
- Supporting province-wide research and training with partners.
- Identifying care and service improvement and innovation opportunities from data and evidence as well as the input of clinicians, administrators and patients
- Operationalizing agreed upon system-wide improvements through supported efforts across B.C. which includes knowledge translation and change management
- Supporting urgent operational challenges if/as required/upon request

Structure of a HIN

HINs are managed together and leverage cross-HIN support and infrastructure. The following is an **example** HIN structure for a larger HIN.



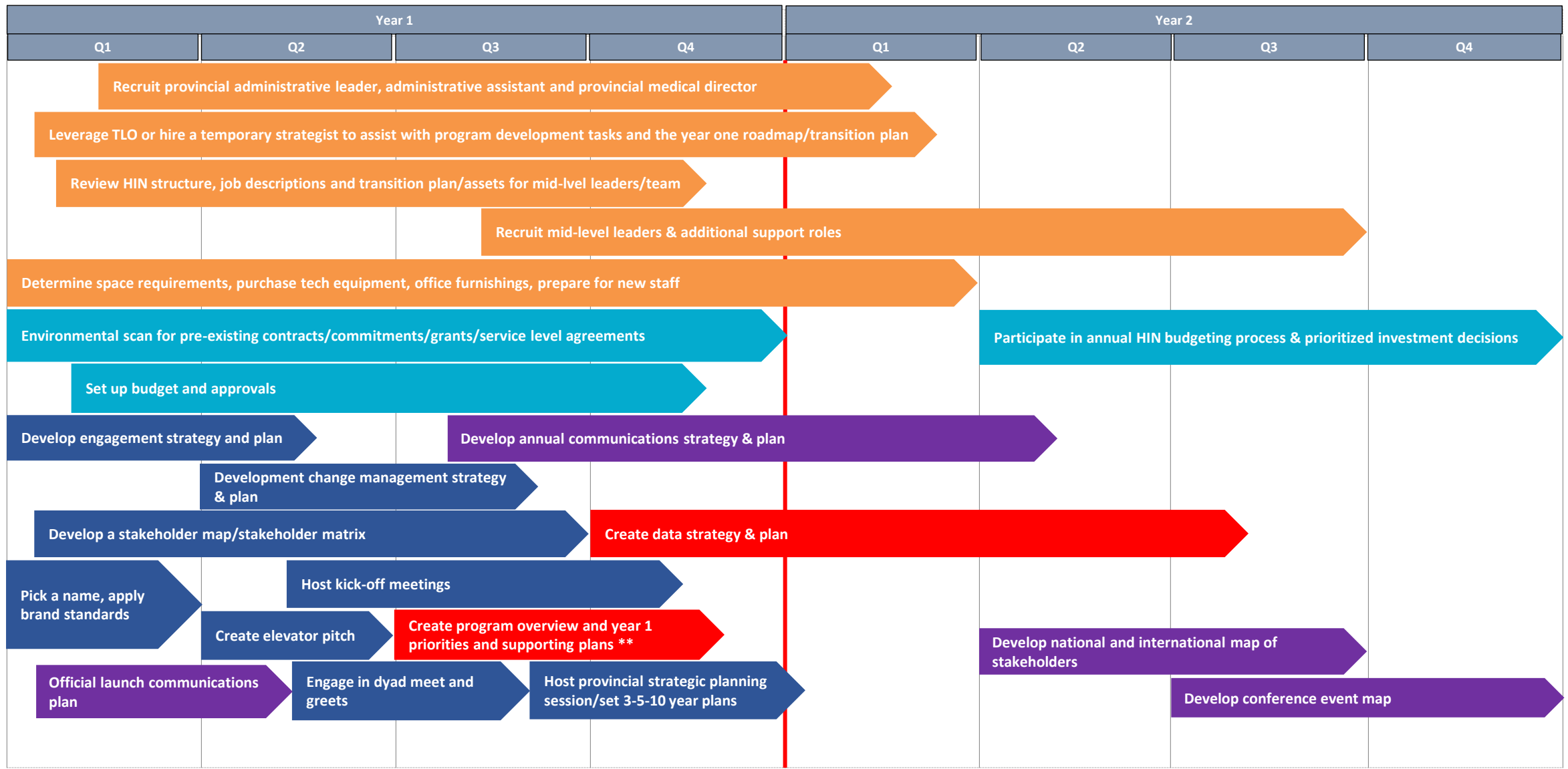
Supporting Governance for a HIN

- *Provincial Steering Committee*
 - Provides advice/recommendation on HIN functions to the leader/s of the HIN to enact on behalf of partners
 - Typically involves physician and administrative leaders from the HIN's field from each health authority, the academic relevant department/division head, relevant community partners & senior scientific leader
- *Provincial Quality Committee (section 51)*
 - May be embedded in function of the Steering Committee or be stand alone depending on HIN size and role.
 - Reviews key quality metrics, monitors key improvement initiatives and supports province-wide reviews as required

Supporting Governance for a HIN cont'd

- *Advisory Committee per HIN (optional)*
 - Patients and community partners provide advice to the HIN's Steering Committee
 - Community partners may be on the provincial steering committee as an alternative (or in addition)
- *Working groups* as required
 - Task teams focused on specific initiatives
- Patient involvement is a core principle
- *Across HIN's and PCP's*: Shared functions include approaches to partnership agreements, governance structure, quality & safety approach, data & analytics, guidelines & standards development and linkages to research

HIN Start Up Schedule – *once a business case is approved*



Legend

ADMINISTRATION/HUMAN RESOURCES

FINANCE

COMMUNICATIONS

PROVINCIAL ENGAGEMENT & GOVERNANCE

STRATEGIC & OPERATIONAL PLANNING

Current HIN's (and PCP's)

HIN's

- Stroke Services BC
- Child Health BC
- Perinatal Services BC
- Trauma Services BC
- Cystic Fibrosis Care BC
- PICNet
- New HIN's

Provincial Clinical Programs (= HIN + \$)

- BC Renal
- BC Transplant
- Cardiac Services BC
- TransCare BC
- PC-ICCN (time limited)

Next steps

- Communication with the network
- Communication regarding recruitment

Discussion/Q&A